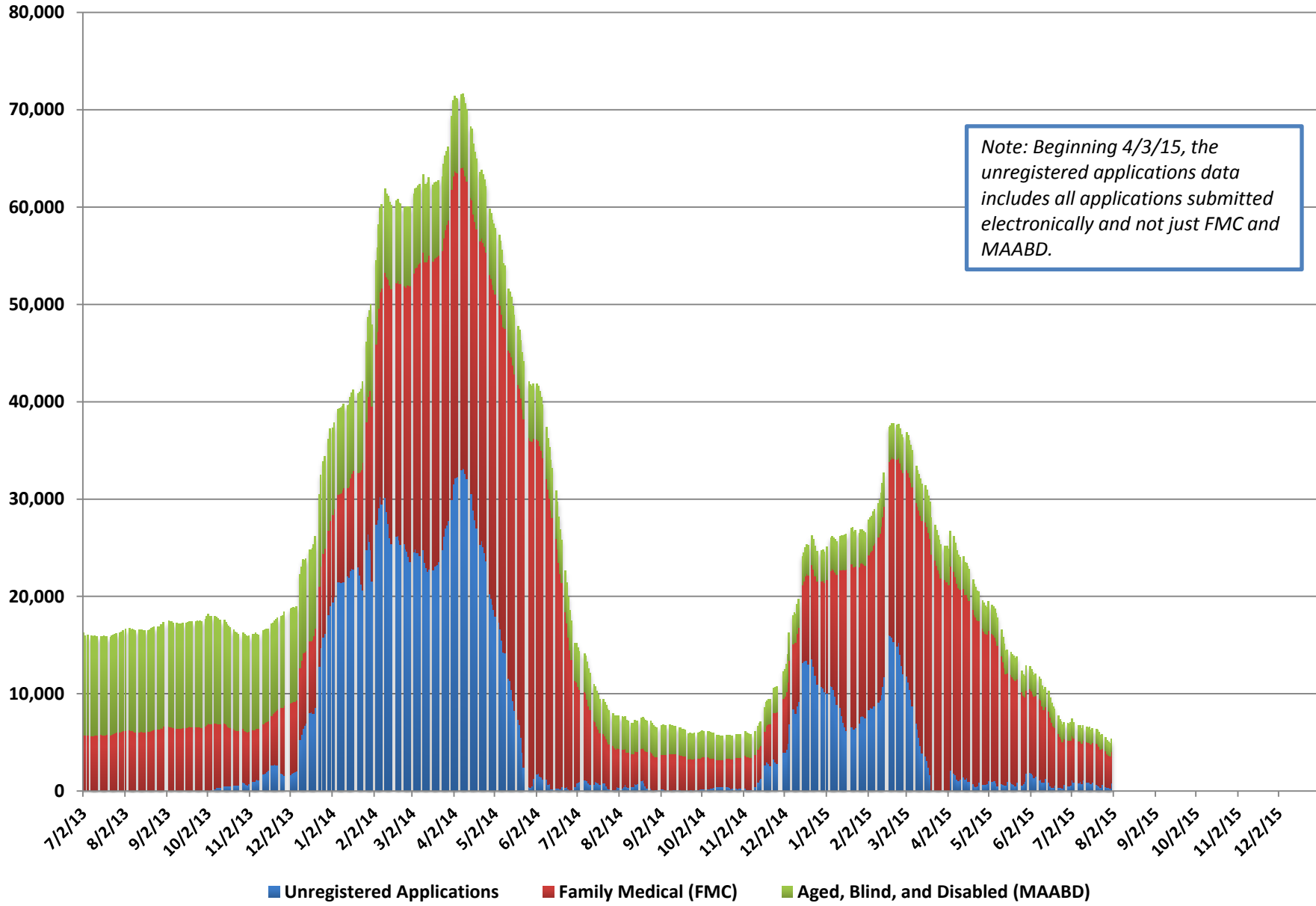


Medicaid Chart Pack

August 2015

Pending Applications

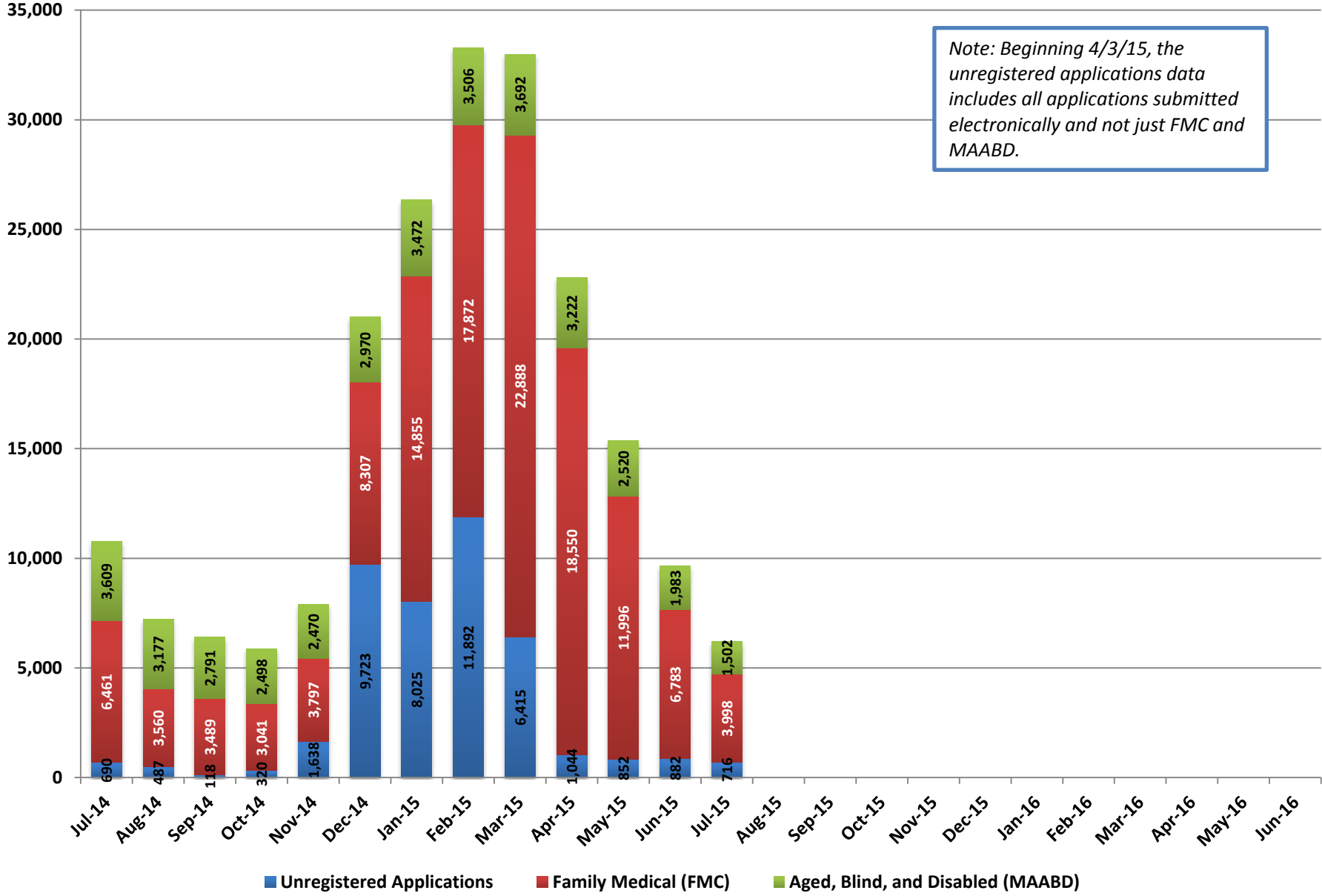


Pending Applications

Date	Unregistered Applications	Family Medical (FMC)			Aged, Blind, and Disabled (MAABD)				Total Medicaid Pending Applications
		Pending <= 45 Days	Pending > 45 Days	Total Applications	Pending <= 45 Days	Pending 46-90 Days	Pending > 90 Days	Total Applications	
7/1/15	573	3,976	679	4,655	1,151	269	399	1,819	7,047
7/2/15	1,161	3,912	592	4,504	1,134	242	355	1,731	7,396
7/3/15	874	3,933	600	4,533	1,099	273	305	1,677	7,084
7/7/15	837	3,800	476	4,276	1,090	260	284	1,634	6,747
7/8/15	949	3,765	408	4,173	1,069	233	278	1,580	6,702
7/9/15	784	3,719	367	4,086	1,053	224	277	1,554	6,424
7/10/15	1,128	3,713	339	4,052	1,054	211	273	1,538	6,718
7/13/15	885	3,830	330	4,160	1,030	221	273	1,524	6,569
7/14/15	911	3,806	290	4,096	1,026	219	272	1,517	6,524
7/15/15	995	3,801	259	4,060	1,028	206	267	1,501	6,556
7/16/15	738	3,820	245	4,065	1,009	197	271	1,477	6,280
7/17/15	887	3,806	252	4,058	1,016	207	266	1,489	6,434
7/20/15	664	3,940	254	4,194	1,033	212	260	1,505	6,363
7/21/15	574	3,974	252	4,226	1,010	209	255	1,474	6,274
7/22/15	480	3,882	238	4,120	996	202	255	1,453	6,053
7/23/15	367	3,665	238	3,903	998	198	255	1,451	5,721
7/24/15	693	3,464	229	3,693	957	192	250	1,399	5,785
7/27/15	456	3,454	228	3,682	950	201	254	1,405	5,543
7/28/15	352	3,363	130	3,493	925	202	256	1,383	5,228
7/29/15	331	3,251	119	3,370	906	190	246	1,342	5,043
7/30/15	277	3,201	110	3,311	879	175	248	1,302	4,890
7/31/15	834	3,146	108	3,254	864	168	251	1,283	5,371

Pending Applications (Monthly Average)

Note: Beginning 4/3/15, the unregistered applications data includes all applications submitted electronically and not just FMC and MAABD.



Pending Applications - Monthly Average

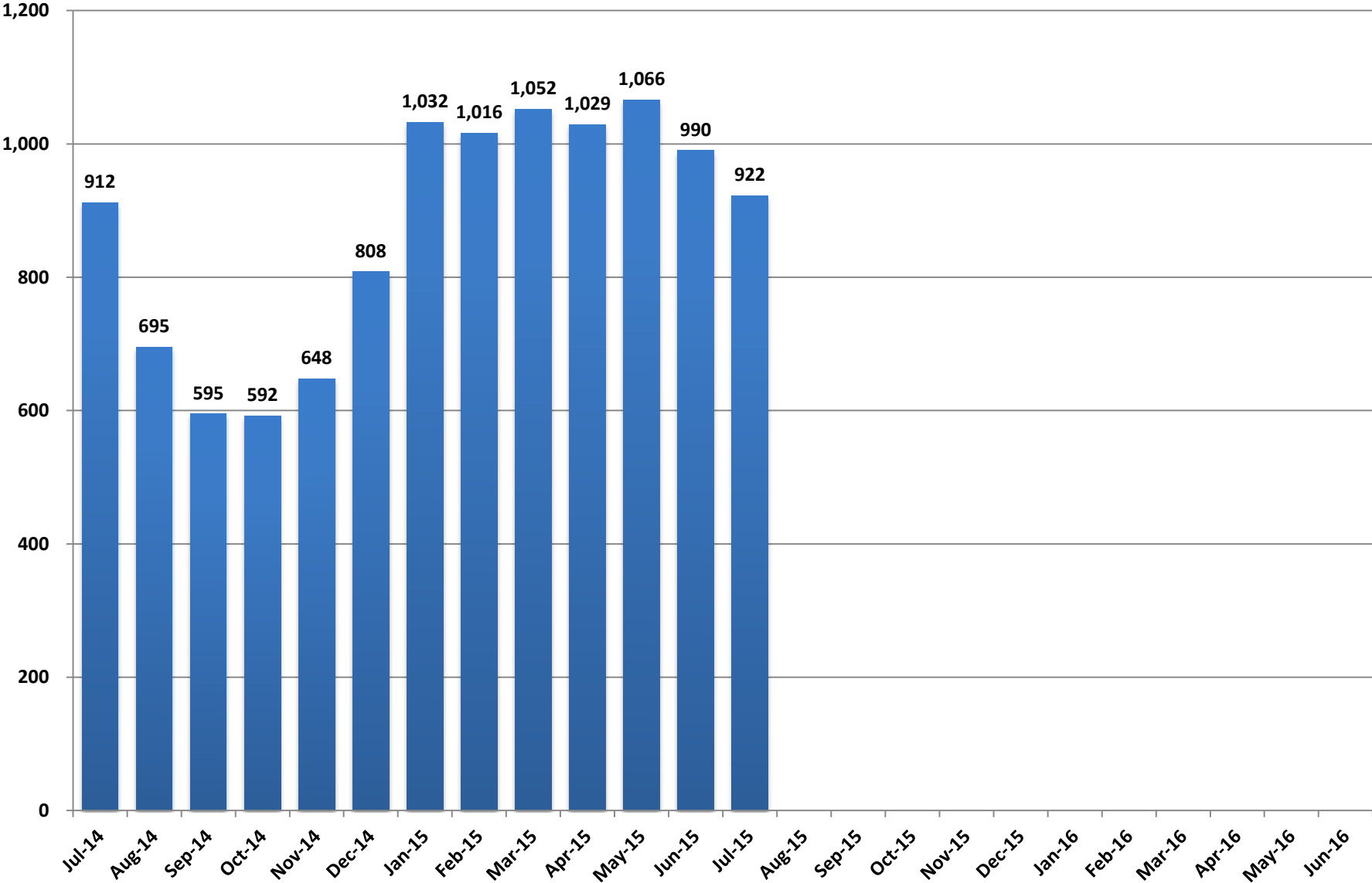
Month	Unregistered Applications	Family Medical (FMC)			Aged, Blind, and Disabled (MAABD)				Total Medicaid Pending Applications
		Pending <= 45 Days	Pending > 45 Days	Total Applications	Pending <= 45 Days	Pending 46-90 Days	Pending > 90 Days	Total Applications	
Jul-14	690	3,449	3,012	6,461	1,096	344	2,169	3,609	10,760
Aug-14	487	2,772	788	3,560	1,139	315	1,724	3,177	7,224
Sep-14	118	2,836	654	3,489	1,056	315	1,420	2,791	6,399
Oct-14	320	2,717	323	3,041	1,000	258	1,239	2,498	5,858
Nov-14	1,638	3,528	269	3,797	1,091	247	1,132	2,470	7,905
Dec-14	9,723	7,947	360	8,307	1,636	288	1,046	2,970	20,999
Jan-15	8,025	11,957	2,898	14,855	1,884	622	966	3,472	26,352
Feb-15	11,892	11,060	6,812	17,872	1,673	939	894	3,506	33,270
Mar-15	6,415	14,906	7,982	22,888	1,931	878	883	3,692	30,662
Apr-15	1,044	8,390	10,160	18,550	1,487	944	792	3,222	22,721
May-15	852	6,932	5,064	11,996	1,314	514	692	2,520	15,369
Jun-15	882	5,175	1,608	6,783	1,119	313	551	1,983	9,648
Jul-15	716	3,692	307	3,998	1,013	214	275	1,502	6,216
Aug-15									
Sep-15									
Oct-15									
Nov-15									
Dec-15									
Jan-16									
Feb-16									
Mar-16									
Apr-16									
May-16									
Jun-16									

Note: Beginning 4/3/15, the unregistered applications data includes all applications submitted electronically and not just FMC and MAABD.

Fiscal Year Averages

Fiscal Year	Unregistered Applications	Family Medical (FMC)			Aged, Blind, and Disabled (MAABD)				Total Medicaid Pending Applications
		Pending <= 45 Days	Pending > 45 Days	Total Applications	Pending <= 45 Days	Pending 46-90 Days	Pending > 90 Days	Total Applications	
FY14	13,681	7,925	8,462	16,387	2,094	1,197	5,355	8,646	35,324
FY15	3,376	6,810	3,357	10,167	1,369	498	1,129	2,997	16,405
FY16 to date	716	3,692	307	3,998	1,013	214	275	1,502	6,216

Medicaid Applications Processed per Working Day



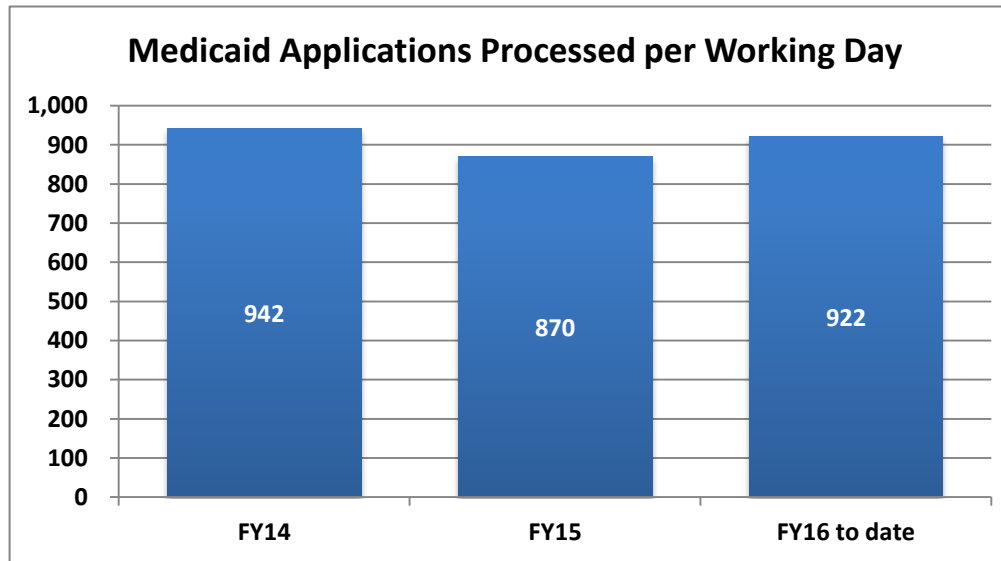
■ Medicaid Applications Processed per Working Day

Medicaid Applications Processed Per Working Day

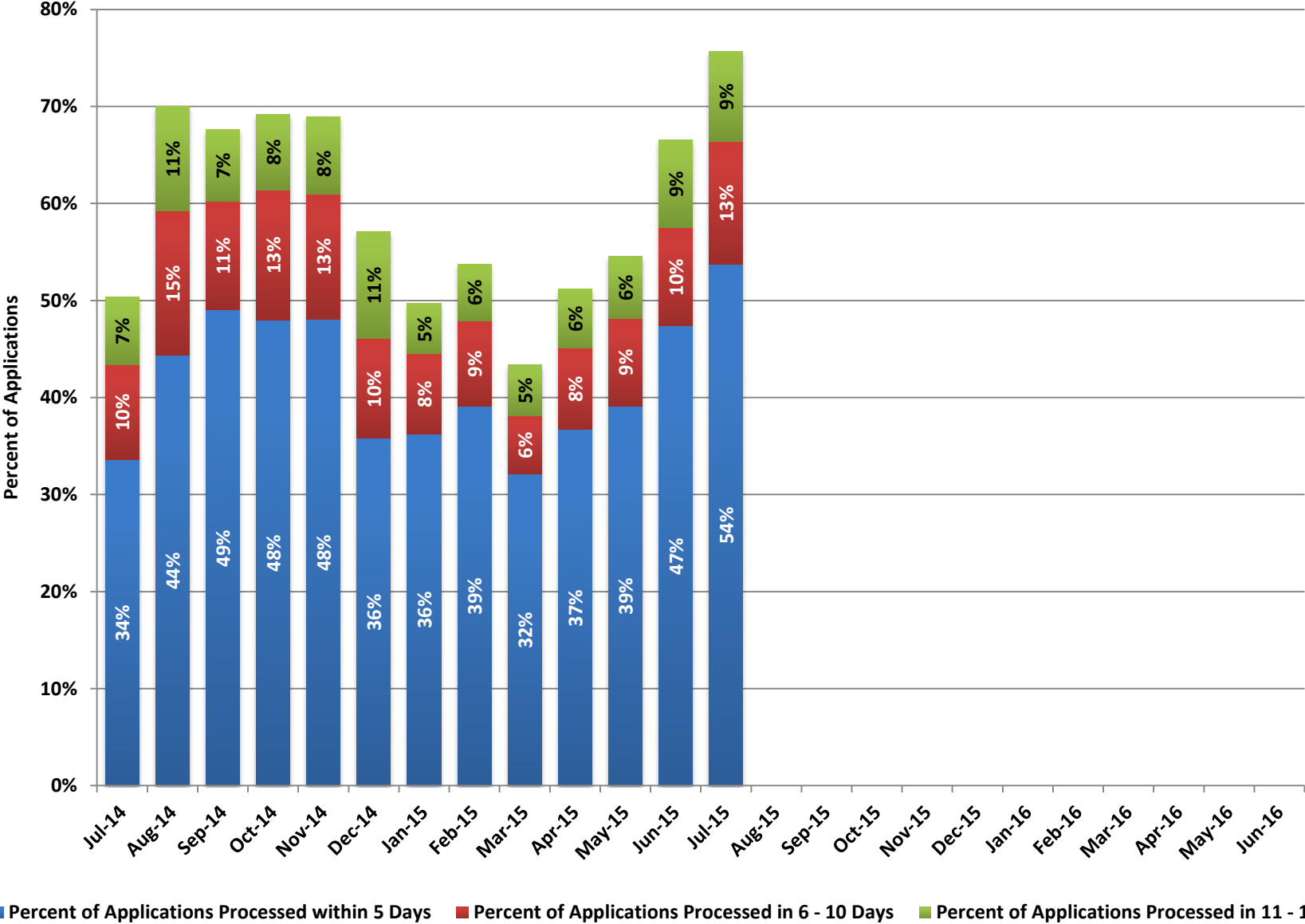
Month	Medicaid Applications Processed per Working Day
Jul-14	912
Aug-14	695
Sep-14	595
Oct-14	592
Nov-14	648
Dec-14	808
Jan-15	1,032
Feb-15	1,016
Mar-15	1,052
Apr-15	1,029
May-15	1,066
Jun-15	990
Jul-15	922
Aug-15	
Sep-15	
Oct-15	
Nov-15	
Dec-15	
Jan-16	
Feb-16	
Mar-16	
Apr-16	
May-16	
Jun-16	

Fiscal Year Averages

Fiscal Year	Medicaid Applications Processed per Working Day
FY14	942
FY15	870
FY16 to date	922



Applications Processed within 15 Days



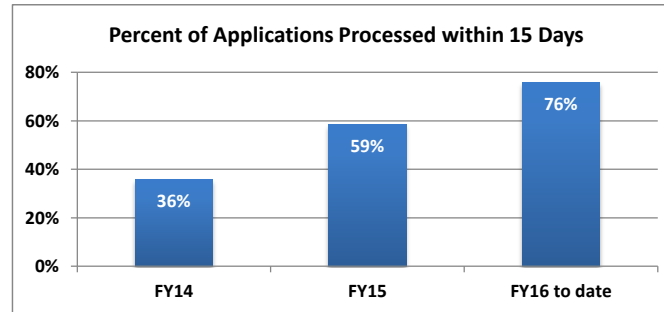
Applications Processed within 15 Days

Month	Applications Processed within 5 Days	Percent of Applications Processed within 5 Days	Applications Processed in 6 - 10 Days	Percent of Applications Processed in 6 - 10 Days	Applications Processed in 11 - 15 Days	Percent of Applications Processed in 11 - 15 Days	Applications Processed within 15 Days	Total Applications Processed	Percent of Applications Processed within 15 Days
Jul-14	6,748	34%	1,958	10%	1,404	7%	10,110	20,070	50%
Aug-14	6,471	44%	2,172	15%	1,570	11%	10,213	14,590	70%
Sep-14	6,130	49%	1,404	11%	918	7%	8,452	12,507	68%
Oct-14	6,252	48%	1,740	13%	1,016	8%	9,008	13,019	69%
Nov-14	5,296	48%	1,423	13%	878	8%	7,597	11,015	69%
Dec-14	6,372	36%	1,821	10%	1,964	11%	10,157	17,785	57%
Jan-15	7,486	36%	1,702	8%	1,068	5%	10,256	20,642	50%
Feb-15	7,514	39%	1,685	9%	1,126	6%	10,325	19,202	54%
Mar-15	7,510	32%	1,402	6%	1,225	5%	10,137	23,366	43%
Apr-15	8,415	37%	1,922	8%	1,401	6%	11,738	22,922	51%
May-15	8,339	39%	1,927	9%	1,357	6%	11,623	21,311	55%
Jun-15	10,318	47%	2,209	10%	1,959	9%	14,486	21,780	67%
Jul-15	10,895	54%	2,579	13%	1,878	9%	15,352	20,289	76%
Aug-15									
Sep-15									
Oct-15									
Nov-15									
Dec-15									
Jan-16									
Feb-16									
Mar-16									
Apr-16									
May-16									
Jun-16									

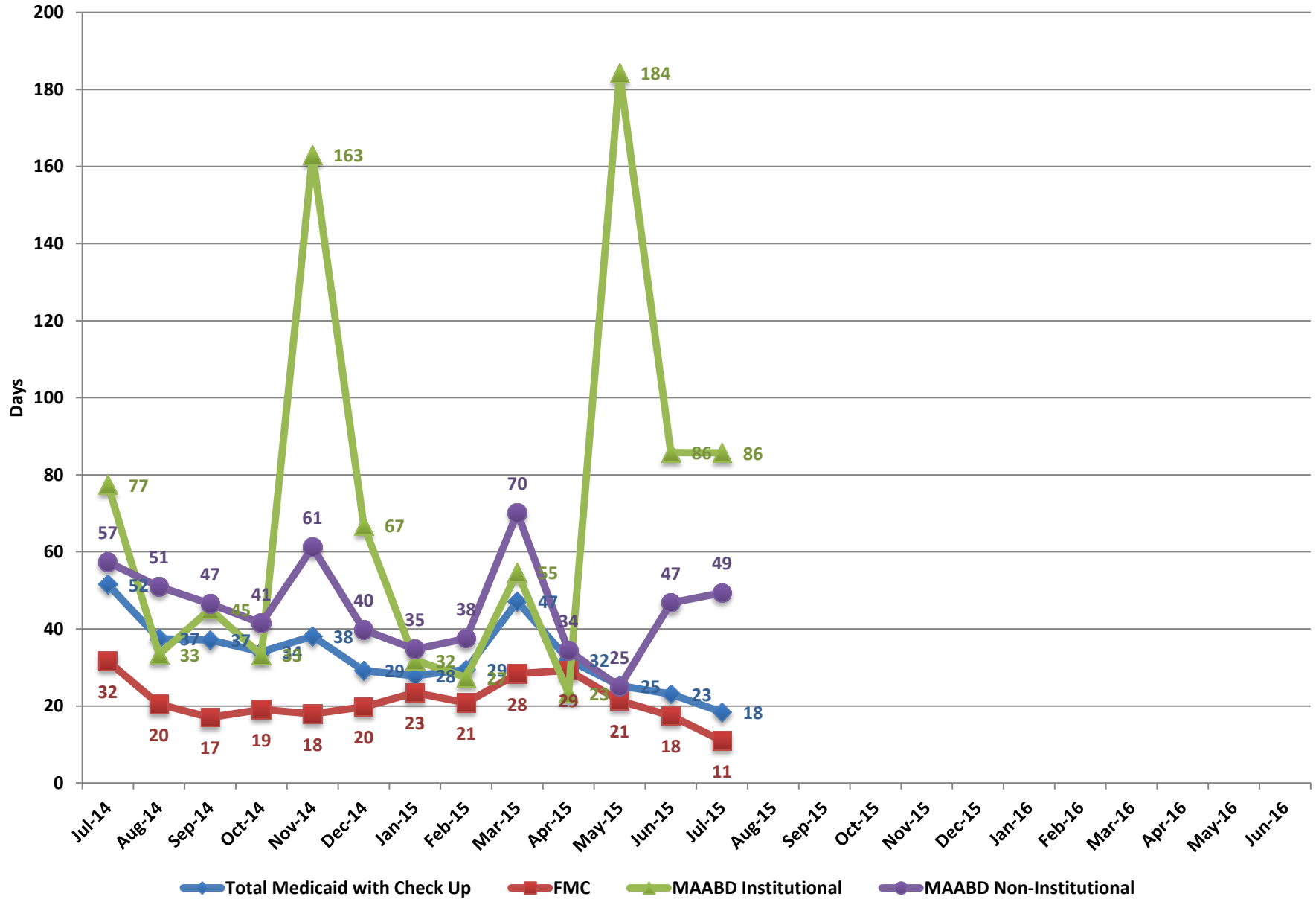
Note: Beginning with October 2013, this data reflects Family Medical (FMC), Newly Eligible Adults, Aged, Blind and Disabled (MAABD), and Nevada Check Up applications. Nevada Check Up applications were not included prior to October 2013. "One and done" applications, which are processed within a single day, started being included in this data in December 2013.

Percent of Applications Processed within 15 Days - Fiscal Year Average

Fiscal Year	% within 15 Days
FY14	36%
FY15	59%
FY16 to date	76%



Average Processing Time (Days)

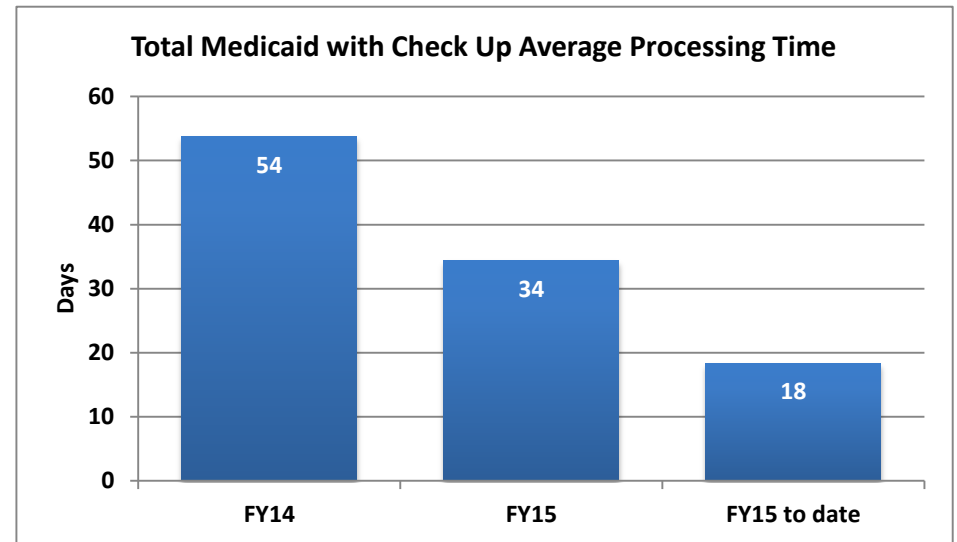


Average Processing Time (Days)

Month	Total Medicaid with Check Up	FMC	MAABD Institutional	MAABD Non-Institutional
Jul-14	52	32	77	57
Aug-14	37	20	33	51
Sep-14	37	17	45	47
Oct-14	34	19	33	41
Nov-14	38	18	163	61
Dec-14	29	20	67	40
Jan-15	28	23	32	35
Feb-15	29	21	27	38
Mar-15	47	28	55	70
Apr-15	32	29	23	34
May-15	25	21	184	25
Jun-15	23	18	86	47
Jul-15	18	11	86	49
Aug-15				
Sep-15				
Oct-15				
Nov-15				
Dec-15				
Jan-16				
Feb-16				
Mar-16				
Apr-16				
May-16				
Jun-16				

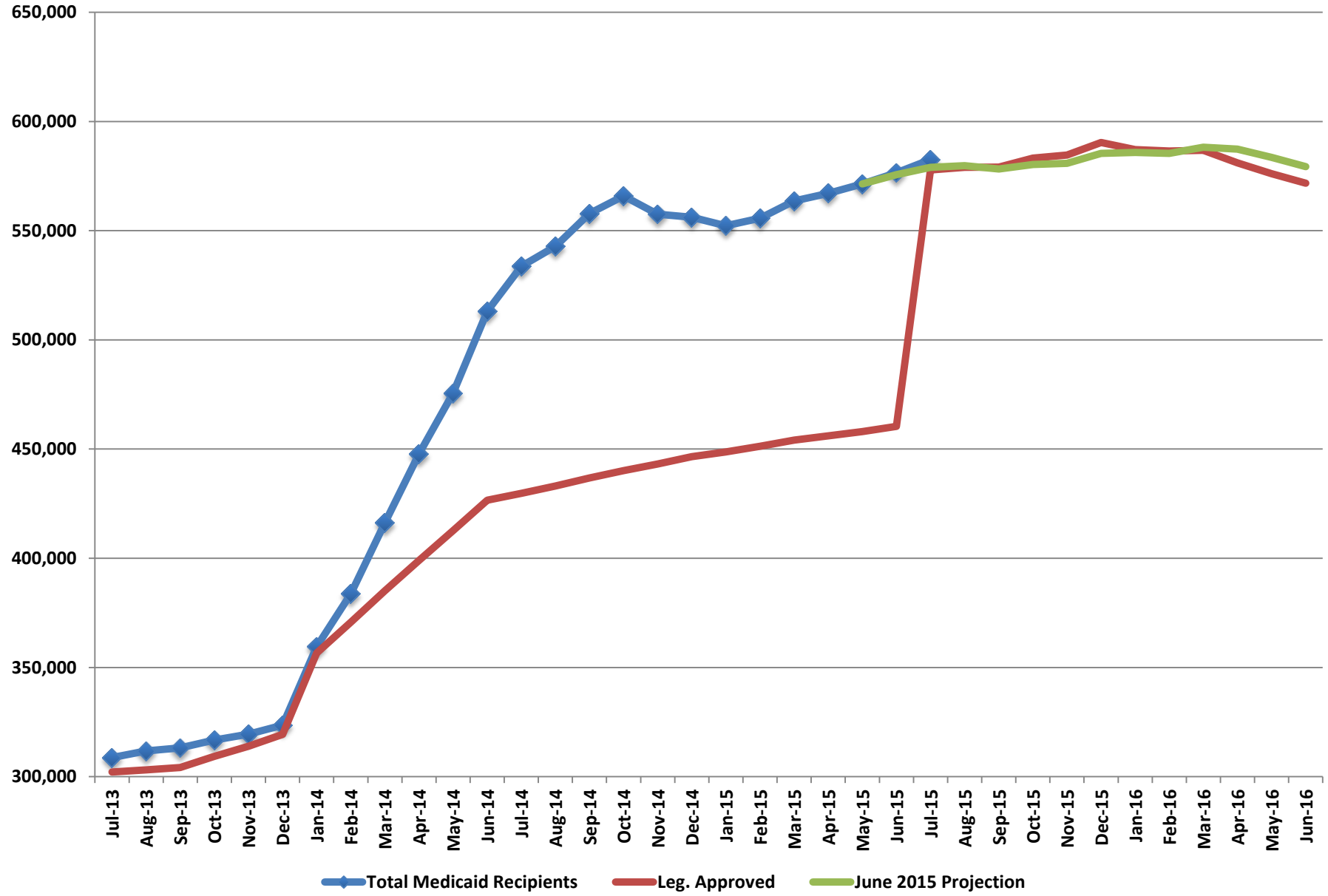
Fiscal Year Averages

Fiscal Year	Total Medicaid with Check Up	FMC	MAABD Institutional	MAABD Non-Institutional
FY14	54			
FY15	34	22	69	45
FY15 to date	18	11	86	49



Note: A few aid codes with average processing days in excess of 100 days drove up the MAABD Institutional average processing time in November 2014 and May 2015.

Total Medicaid Recipients

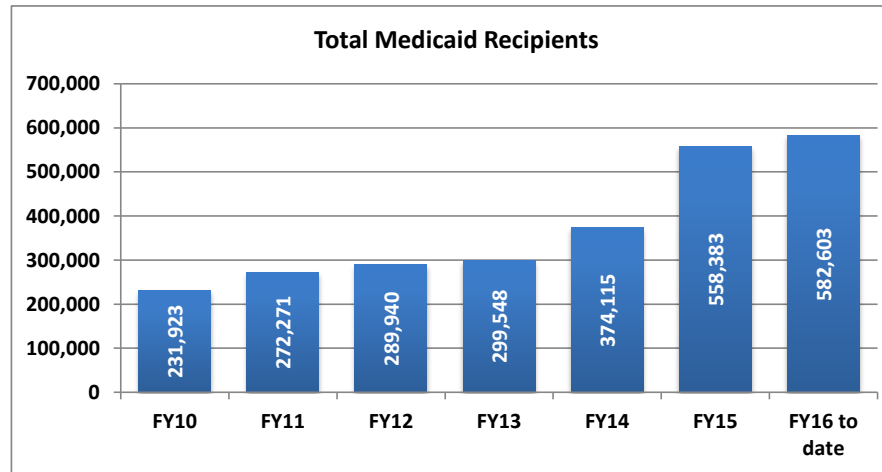


Total Medicaid Recipients (without retro.)

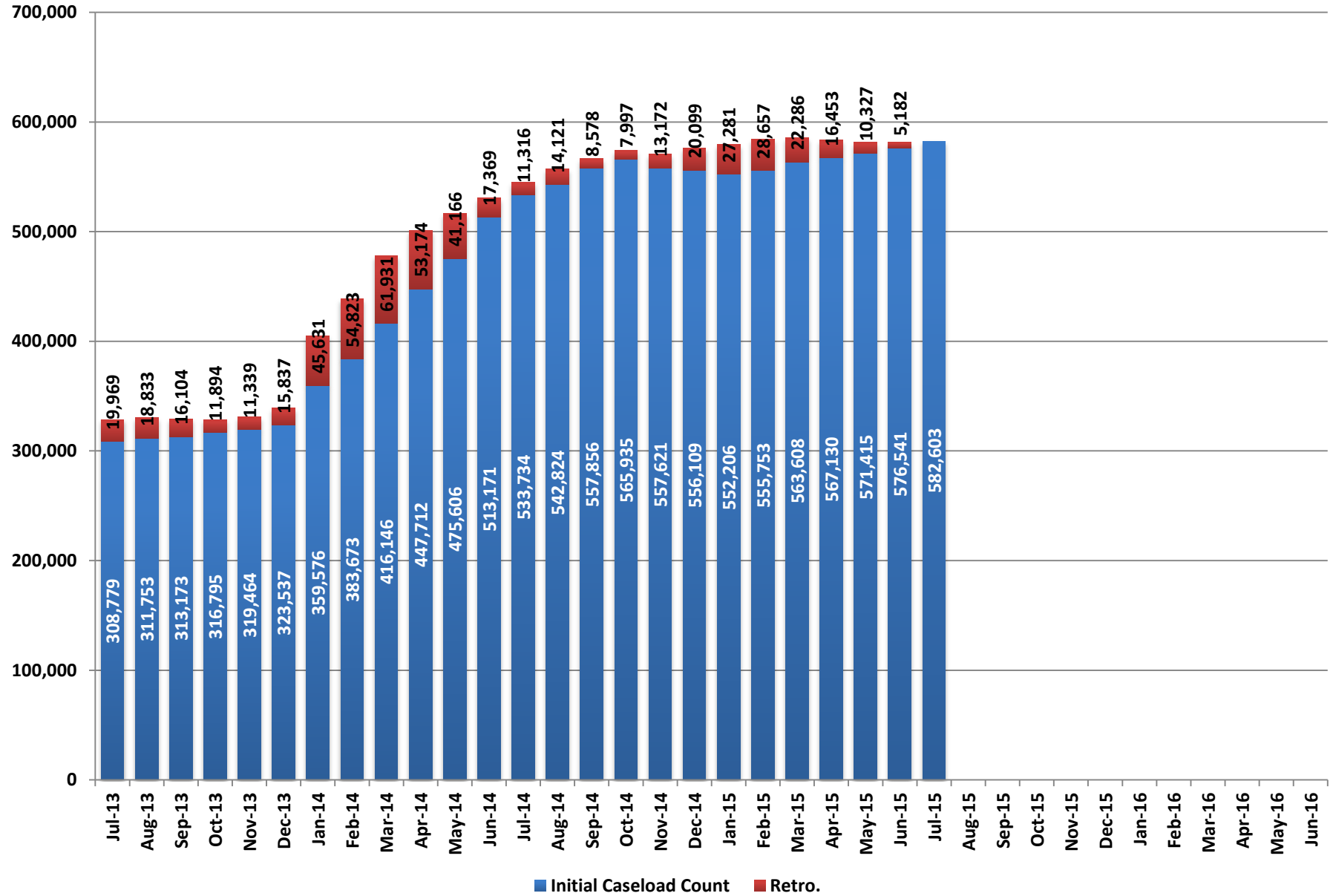
Month	Total Medicaid Recipients	Leg. Approved	June 2015 Projection
Jul-13	308,779	302,133	
Aug-13	311,753	303,108	
Sep-13	313,173	304,125	
Oct-13	316,795	309,289	
Nov-13	319,464	313,966	
Dec-13	323,537	319,296	
Jan-14	359,576	356,572	
Feb-14	383,673	370,719	
Mar-14	416,146	385,155	
Apr-14	447,712	398,982	
May-14	475,606	412,566	
Jun-14	513,171	426,551	
Jul-14	533,734	429,697	
Aug-14	542,824	433,059	
Sep-14	557,856	436,736	
Oct-14	565,935	440,163	
Nov-14	557,621	443,172	
Dec-14	556,109	446,496	
Jan-15	552,206	448,682	
Feb-15	555,753	451,278	
Mar-15	563,608	454,123	
Apr-15	567,130	456,099	
May-15	571,415	458,039	
Jun-15	576,541	460,431	575,683
Jul-15	582,603	577,803	578,984
Aug-15		579,006	579,814
Sep-15		579,094	578,210
Oct-15		583,229	580,319
Nov-15		584,641	580,845
Dec-15		590,343	585,395
Jan-16		587,111	585,828
Feb-16		586,521	585,459
Mar-16		586,771	588,200
Apr-16		581,029	587,372
May-16		576,122	583,557
Jun-16		571,718	579,319

Fiscal Year Average

Fiscal Year	Total Medicaid Recipients	Percent Change
FY10	231,923	
FY11	272,271	17.4%
FY12	289,940	6.5%
FY13	299,548	3.3%
FY14	374,115	24.9%
FY15	558,383	49.3%
FY16 to date	582,603	4.3%



Total Medicaid - Initial and Retroactive Caseload Counts



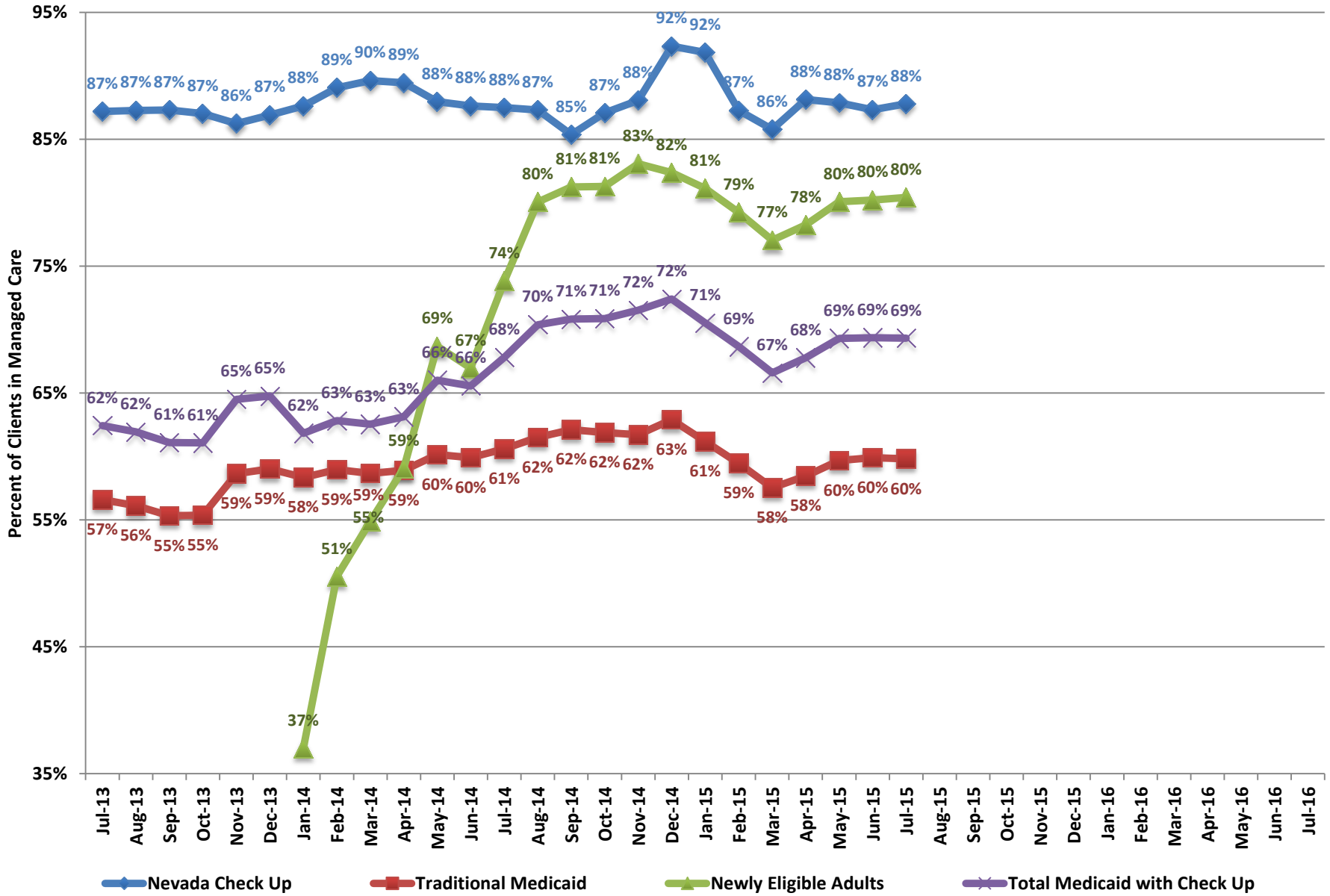
Initial and Retroactive Caseload Counts

	FMC				Aged				Blind and Disabled				Total MAABD				Total Medicaid			
	Initial Caseload Count	Retro.	Caseload with Retro.	% Retro.	Initial Caseload Count	Retro.	Caseload with Retro.	% Retro	Initial Caseload Count	Retro.	Caseload with Retro.	% Retro	Initial Caseload Count	Retro.	Caseload with Retro.	% Retro	Initial Caseload Count	Retro.	Caseload with Retro.	% Retro
Jul-13	225,093	17,022	242,115	7.6%	10,774	251	11,025	2.3%	33,545	1,760	35,305	5.2%	75,159	2,796	77,955	3.7%	308,779	19,969	328,748	6.5%
Aug-13	227,559	15,879	243,438	7.0%	10,792	263	11,055	2.4%	33,677	1,804	35,481	5.4%	75,479	2,894	78,373	3.8%	311,753	18,833	330,586	6.0%
Sep-13	228,643	13,397	242,040	5.9%	10,791	278	11,069	2.6%	33,864	1,597	35,461	4.7%	75,786	2,572	78,358	3.4%	313,173	16,104	329,277	5.1%
Oct-13	231,618	9,485	241,103	4.1%	10,842	279	11,121	2.6%	34,201	1,323	35,524	3.9%	76,358	2,269	78,627	3.0%	316,795	11,894	328,689	3.8%
Nov-13	233,412	9,381	242,793	4.0%	10,921	228	11,149	2.1%	34,392	1,036	35,428	3.0%	77,089	1,706	78,795	2.2%	319,464	11,339	330,803	3.5%
Dec-13	237,984	12,908	250,892	5.4%	10,802	371	11,173	3.4%	34,116	1,493	35,609	4.4%	76,579	2,754	79,333	3.6%	323,537	15,837	339,374	4.9%
Jan-14	272,842	43,351	316,193	15.9%	11,005	271	11,276	2.5%	34,268	1,389	35,657	4.1%	77,635	2,212	79,847	2.8%	359,576	45,631	405,207	12.7%
Feb-14	295,882	52,674	348,556	17.8%	11,054	265	11,319	2.4%	34,689	1,225	35,914	3.5%	78,677	2,061	80,738	2.6%	383,673	54,823	438,496	14.3%
Mar-14	327,122	60,255	387,377	18.4%	11,168	195	11,363	1.7%	35,253	873	36,126	2.5%	79,811	1,629	81,440	2.0%	416,146	61,931	478,077	14.9%
Apr-14	358,001	51,288	409,289	14.3%	11,169	251	11,420	2.2%	35,621	804	36,425	2.3%	80,503	1,743	82,246	2.2%	447,712	53,174	500,886	11.9%
May-14	385,547	39,256	424,803	10.2%	11,180	280	11,460	2.5%	35,857	724	36,581	2.0%	80,837	1,870	82,707	2.3%	475,606	41,166	516,772	8.7%
Jun-14	422,741	15,267	438,008	3.6%	11,187	303	11,490	2.7%	36,065	631	36,696	1.7%	81,181	2,012	83,193	2.5%	513,171	17,369	530,540	3.4%
Jul-14	442,159	9,546	451,705	2.2%	11,316	281	11,597	2.5%	36,472	458	36,930	1.3%	82,299	1,668	83,967	2.0%	533,734	11,316	545,050	2.1%
Aug-14	450,734	12,095	462,829	2.7%	11,293	356	11,649	3.2%	36,638	602	37,240	1.6%	82,776	1,906	84,682	2.3%	542,824	14,121	556,945	2.6%
Sep-14	458,949	12,728	471,677	2.8%	11,363	323	11,686	2.8%	36,869	568	37,437	1.5%	83,635	1,621	85,256	1.9%	557,856	8,578	566,434	1.5%
Oct-14	471,109	7,140	478,249	1.5%	11,563	174	11,737	1.5%	37,574	206	37,780	0.5%	85,387	717	86,104	0.8%	565,935	7,997	573,932	1.4%
Nov-14	462,489	12,255	474,744	2.6%	11,601	139	11,740	1.2%	37,519	279	37,798	0.7%	85,652	730	86,382	0.9%	557,621	13,172	570,793	2.4%
Dec-14	461,724	19,177	480,901	4.2%	11,628	125	11,753	1.1%	37,387	290	37,677	0.8%	84,785	793	85,578	0.9%	556,109	20,099	576,208	3.6%
Jan-15	457,316	26,191	483,507	5.7%	11,649	134	11,783	1.2%	37,585	350	37,935	0.9%	85,299	1,006	86,305	1.2%	552,206	27,281	579,487	4.9%
Feb-15	460,133	27,640	487,773	6.0%	11,666	99	11,765	0.8%	37,725	320	38,045	0.8%	86,031	890	86,921	1.0%	555,753	28,657	584,410	5.2%
Mar-15	467,069	21,535	488,604	4.6%	11,719	55	11,774	0.5%	37,923	202	38,125	0.5%	86,796	631	87,427	0.7%	563,608	22,286	585,894	4.0%
Apr-15	469,704	15,892	485,596	3.4%	11,764	61	11,825	0.5%	38,176	168	38,344	0.4%	87,357	603	87,960	0.7%	567,130	16,453	583,583	2.9%
May-15	468,045	15,212	483,257	3.3%	11,689	153	11,842	1.3%	38,168	337	38,505	0.9%	87,438	933	88,371	1.1%	571,415	10,327	581,742	1.8%
Jun-15	477,535	5,236	482,771	1.1%	11,878	-63	11,815	-0.5%	38,680	21	38,701	0.1%	88,894	-62	88,832	-0.1%	576,541	5,182	581,723	0.9%
Jul-15	477,632				11,806				38,508				88,608				582,603			
Aug-15																				
Sep-15																				
Oct-15																				
Nov-15																				
Dec-15																				
Jan-16																				
Feb-16																				
Mar-16																				
Apr-16																				
May-16																				
Jun-16																				

Fiscal Year Averages

Fiscal Year	FMC				Aged				Blind and Disabled				Total MAABD				Total Medicaid			
	Initial Caseload Count	Retro.	Caseload with Retro.	% Retro.	Initial Caseload Count	Retro.	Caseload with Retro.	% Retro	Initial Caseload Count	Retro.	Caseload with Retro.	% Retro	Initial Caseload Count	Retro.	Caseload with Retro.	% Retro	Initial Caseload Count	Retro.	Caseload with Retro.	% Retro
FY14	287,204	28,347	315,551	9.5%	10,974	270	11,243	2.5%	34,629	1,222	35,851	3.6%	77,925	2,210	80,134	2.8%	374,115	30,673	404,788	8.0%
FY15	462,247	15,387	477,634	3.3%	11,594	153	11,747	1.3%	37,560	317	37,876	0.8%	85,529	953	86,482	1.1%	558,394	15,456	573,850	2.8%
FY16 to date	477,632				11,806				38,508				88,608				582,603			

Percent in Managed Care by Client Type



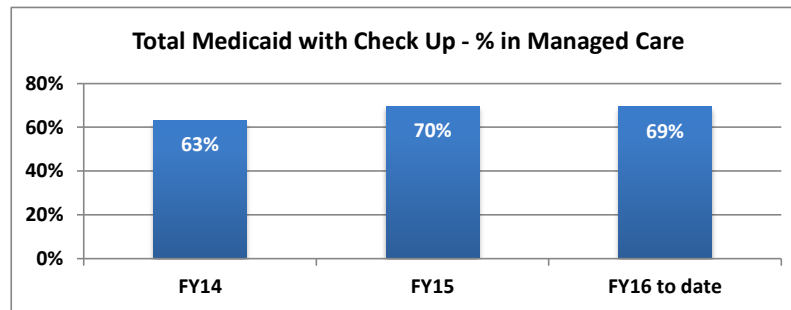
Managed Care Enrollment

Month	Nevada Check Up			Traditional Medicaid			Newly Eligible Adults			Total Medicaid with Check Up		
	Managed Care Enrollment	Total Caseload	% in Managed Care	Managed Care Enrollment	Total Caseload net of SLMB	% in Managed Care	Managed Care Enrollment	Total Caseload	% in Managed Care	Managed Care Enrollment	Total Caseload net of SLMB	% in Managed Care
Jul-14	21,056	24,062	88%	246,697	406,985	61%	102,004	138,162	74%	369,757	545,147	68%
Aug-14	22,749	26,057	87%	255,444	415,319	62%	116,710	145,761	80%	394,903	561,080	70%
Sep-14	20,727	24,276	85%	259,459	417,739	62%	122,941	151,308	81%	403,127	569,047	71%
Oct-14	21,526	24,717	87%	260,195	420,490	62%	127,480	156,835	81%	409,201	577,325	71%
Nov-14	21,662	24,597	88%	252,144	408,592	62%	133,092	160,205	83%	406,898	568,797	72%
Dec-14	21,798	23,604	92%	252,731	401,773	63%	135,852	164,906	82%	410,381	566,679	72%
Jan-15	19,078	20,770	92%	240,793	393,460	61%	134,994	166,393	81%	394,865	559,853	71%
Feb-15	17,980	20,601	87%	233,076	392,006	59%	135,531	171,041	79%	386,587	563,047	69%
Mar-15	17,146	19,987	86%	226,252	393,219	58%	136,242	176,834	77%	379,640	570,053	67%
Apr-15	17,813	20,210	88%	229,849	393,174	58%	140,674	179,759	78%	388,336	572,933	68%
May-15	18,718	21,300	88%	237,126	397,316	60%	144,971	181,051	80%	400,815	578,367	69%
Jun-15	18,420	21,090	87%	240,952	402,207	60%	145,036	180,817	80%	404,408	583,024	69%
Jul-15	18,516	21,090	88%	243,673	407,429	60%	146,559	182,223	80%	408,748	589,652	69%
Aug-15	18,859			247,172			149,111			415,142		
Sep-15												
Oct-15												
Nov-15												
Dec-15												
Jan-16												
Feb-16												
Mar-16												
Apr-16												
May-16												
Jun-16												
Jul-16												

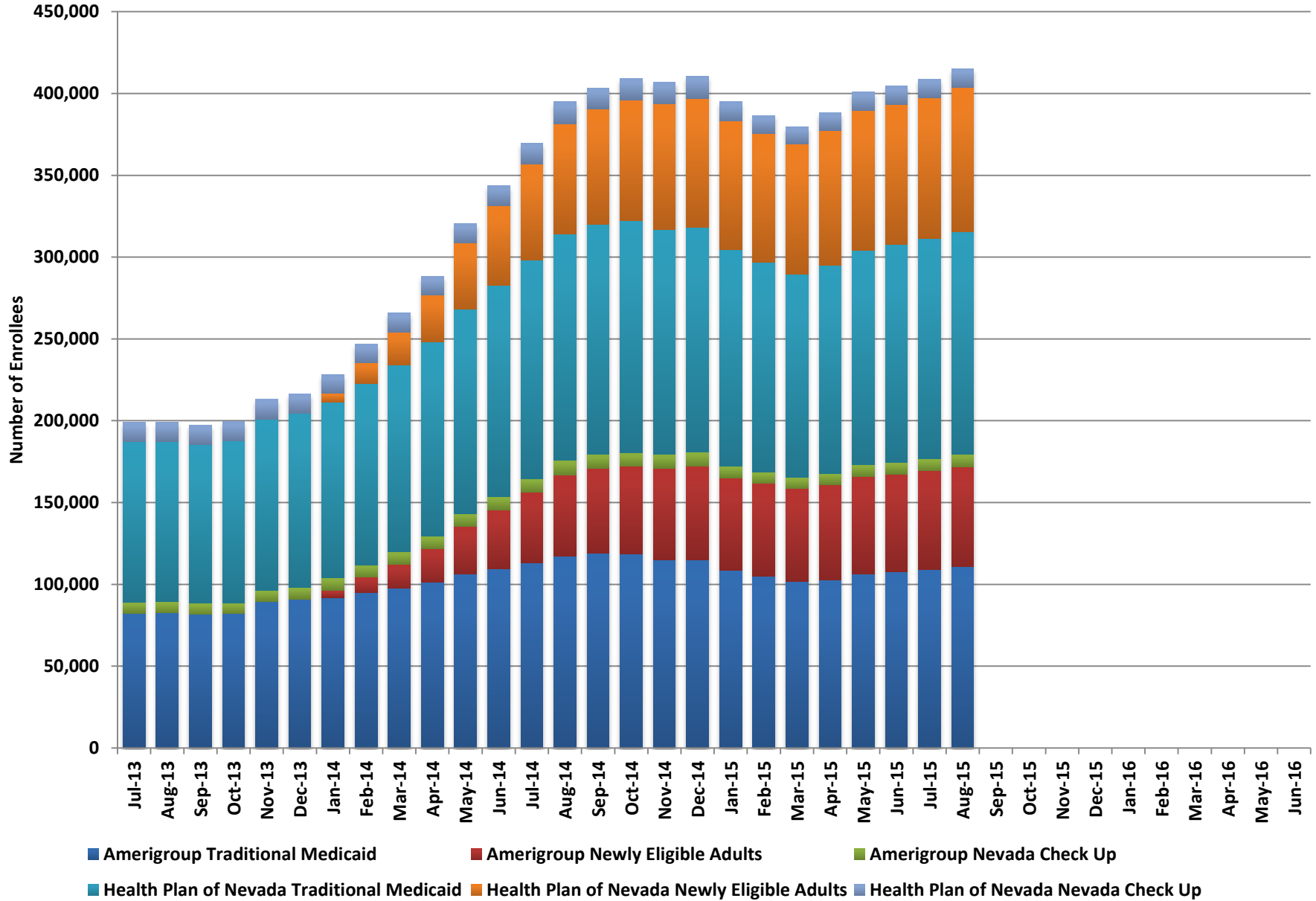
Note: Traditional Medicaid totals include both cat 11 (CHIP Expansion), and cat 12 (TANF/CHAP) populations.

Total Medicaid with Check Up Fiscal Year Averages

	Managed Care Enrollment	% in Managed Care
FY14	243,142	63%
FY15	395,743	70%
FY16 to date	411,945	69%



Managed Care Enrollment by Plan and Client Type



Managed Care Enrollment by Plan and Client Type

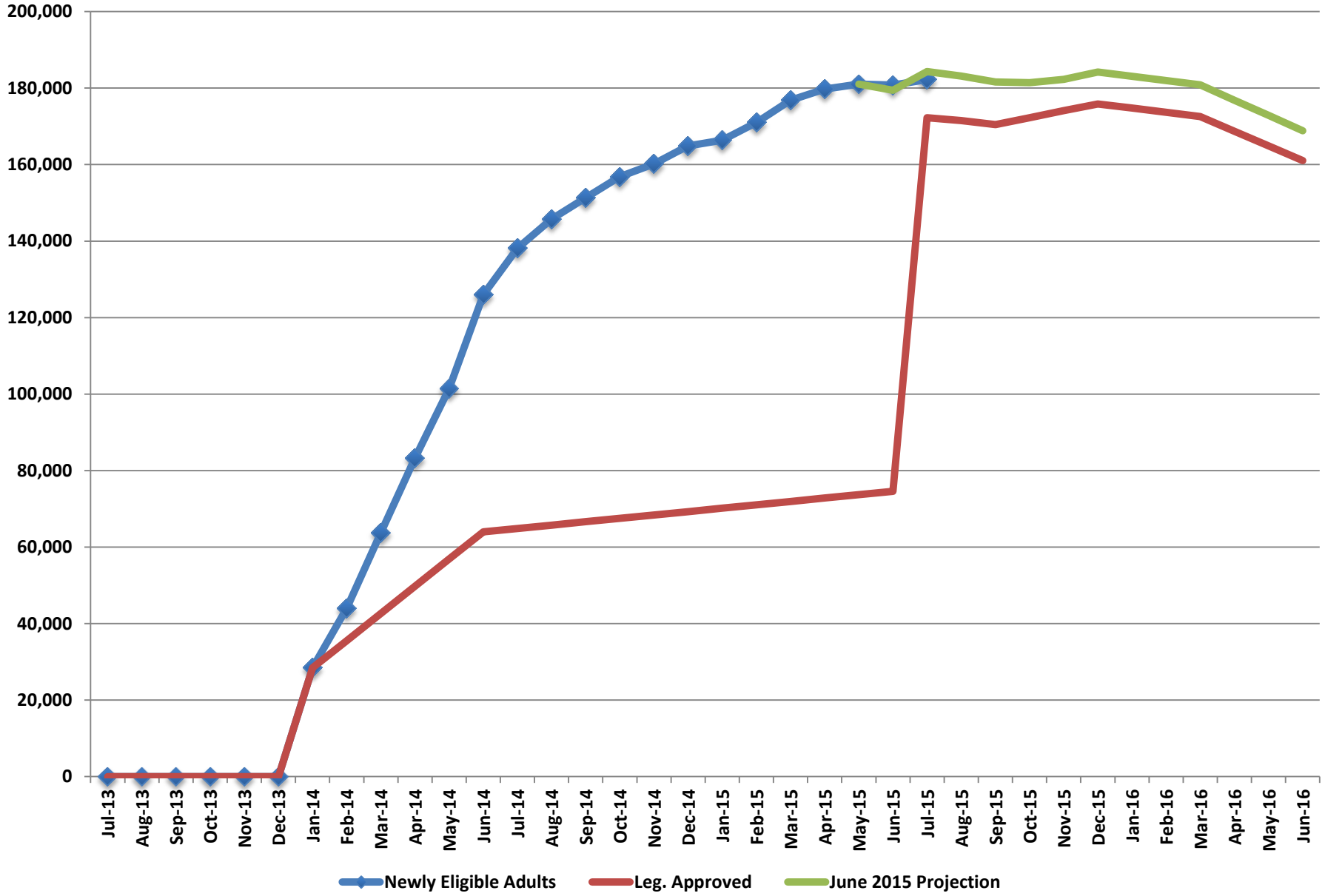
Month	Amerigroup								Health Plan of Nevada								Total Managed Care Enrollment
	Traditional Medicaid	% of Traditional Medicaid	Newly Eligible Adults	% of Newly Eligible	Nevada Check Up	% of Nevada Check Up	Total for Plan	% of Total	Traditional Medicaid	% of Traditional Medicaid	Newly Eligible Adults	% of Newly Eligible	Nevada Check Up	% of Nevada Check Up	Total for Plan	% of Total	
Jul-14	113,152	46%	43,213	42%	8,358	40%	164,723	45%	133,545	54%	58,791	58%	12,698	60%	205,034	55%	369,757
Aug-14	117,126	46%	49,565	42%	9,101	40%	175,792	45%	138,318	54%	67,145	58%	13,648	60%	219,111	55%	394,903
Sep-14	118,938	46%	52,175	42%	8,205	40%	179,318	44%	140,521	54%	70,766	58%	12,522	60%	223,809	56%	403,127
Oct-14	118,400	46%	53,694	42%	8,229	38%	180,323	44%	141,795	54%	73,786	58%	13,297	62%	228,878	56%	409,201
Nov-14	114,862	46%	56,132	42%	8,357	39%	179,351	44%	137,282	54%	76,960	58%	13,305	61%	227,547	56%	406,898
Dec-14	115,024	46%	57,181	42%	8,514	39%	180,719	44%	137,707	54%	78,671	58%	13,284	61%	229,662	56%	410,381
Jan-15	108,592	45%	56,467	42%	7,310	38%	172,369	44%	132,201	55%	78,527	58%	11,768	62%	222,496	56%	394,865
Feb-15	105,039	45%	56,648	42%	6,902	38%	168,589	44%	128,037	55%	78,883	58%	11,078	62%	217,998	56%	386,587
Mar-15	101,853	45%	56,757	42%	6,601	38%	165,211	44%	124,399	55%	79,485	58%	10,545	62%	214,429	56%	379,640
Apr-15	102,822	45%	58,261	41%	6,834	38%	167,917	43%	127,027	55%	82,413	59%	10,979	62%	220,419	57%	388,336
May-15	106,202	45%	59,826	41%	7,284	39%	173,312	43%	130,924	55%	85,145	59%	11,434	61%	227,503	57%	400,815
Jun-15	107,816	45%	59,627	41%	7,231	39%	174,674	43%	133,136	55%	85,409	59%	11,189	61%	229,734	57%	404,408
Jul-15	109,200	45%	60,248	41%	7,292	39%	176,740	43%	134,473	55%	86,311	59%	11,224	61%	232,008	57%	408,748
Aug-15	110,797	45%	61,059	41%	7,481	40%	179,337	43%	136,375	55%	88,052	59%	11,378	60%	235,805	57%	415,142
Sep-15																	
Oct-15																	
Nov-15																	
Dec-15																	
Jan-16																	
Feb-16																	
Mar-16																	
Apr-16																	
May-16																	
Jun-16																	

Note: Traditional Medicaid totals include both cat 11 (CHIP Expansion), and cat 12 (TANF/CHAP) populations.

Fiscal Year Averages

Fiscal Year	Amerigroup								Health Plan of Nevada							
	Traditional Medicaid	% of Traditional Medicaid	Newly Eligible Adults	% of Newly Eligible	Nevada Check Up	% of Nevada Check Up	Total for Plan	% of Total	Traditional Medicaid	% of Traditional Medicaid	Newly Eligible Adults	% of Newly Eligible	Nevada Check Up	% of Nevada Check Up	Total for Plan	% of Total
FY14	92,468	46%	19,115	43%	7,348	38%	109,373	45%	109,038	54%	25,929	57%	11,760	62%	133,762	55%
FY15	110,819	45%	54,962	42%	7,744	39%	173,525	44%	133,741	55%	76,332	58%	12,146	61%	222,218	56%
FY16 to date	109,999	45%	60,654	41%	7,387	40%	178,039	43%	135,424	55%	87,182	59%	11,301	60%	233,907	57%

Newly Eligible Adults

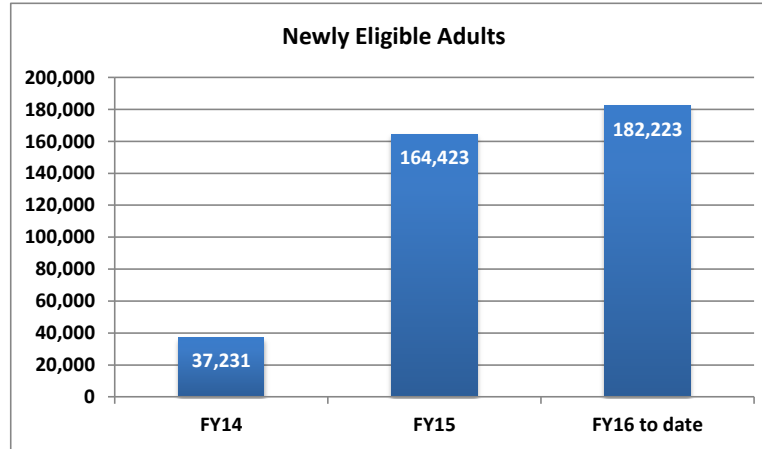


Newly Eligible Adults (100% FMAP)

Month	Newly Eligible Adults	Leg. Approved	June 2015 Projection
Jul-13		0	
Aug-13		0	
Sep-13		0	
Oct-13		0	
Nov-13		0	
Dec-13		0	
Jan-14	28,435	28,429	
Feb-14	44,012	35,536	
Mar-14	63,731	42,643	
Apr-14	83,216	49,750	
May-14	101,384	56,858	
Jun-14	125,989	63,965	
Jul-14	138,162	64,849	
Aug-14	145,761	65,733	
Sep-14	151,308	66,617	
Oct-14	156,835	67,501	
Nov-14	160,205	68,386	
Dec-14	164,906	69,270	
Jan-15	166,393	70,154	
Feb-15	171,041	71,038	
Mar-15	176,834	71,922	
Apr-15	179,759	72,806	
May-15	181,051	73,690	
Jun-15	180,817	74,574	179,418
Jul-15	182,223	172,250	184,322
Aug-15		171,482	183,162
Sep-15		170,437	181,623
Oct-15		172,267	181,443
Nov-15		174,080	182,300
Dec-15		175,874	184,214
Jan-16		174,775	183,100
Feb-16		173,677	181,986
Mar-16		172,578	180,872
Apr-16		168,711	176,855
May-16		164,862	172,857
Jun-16		161,032	168,877

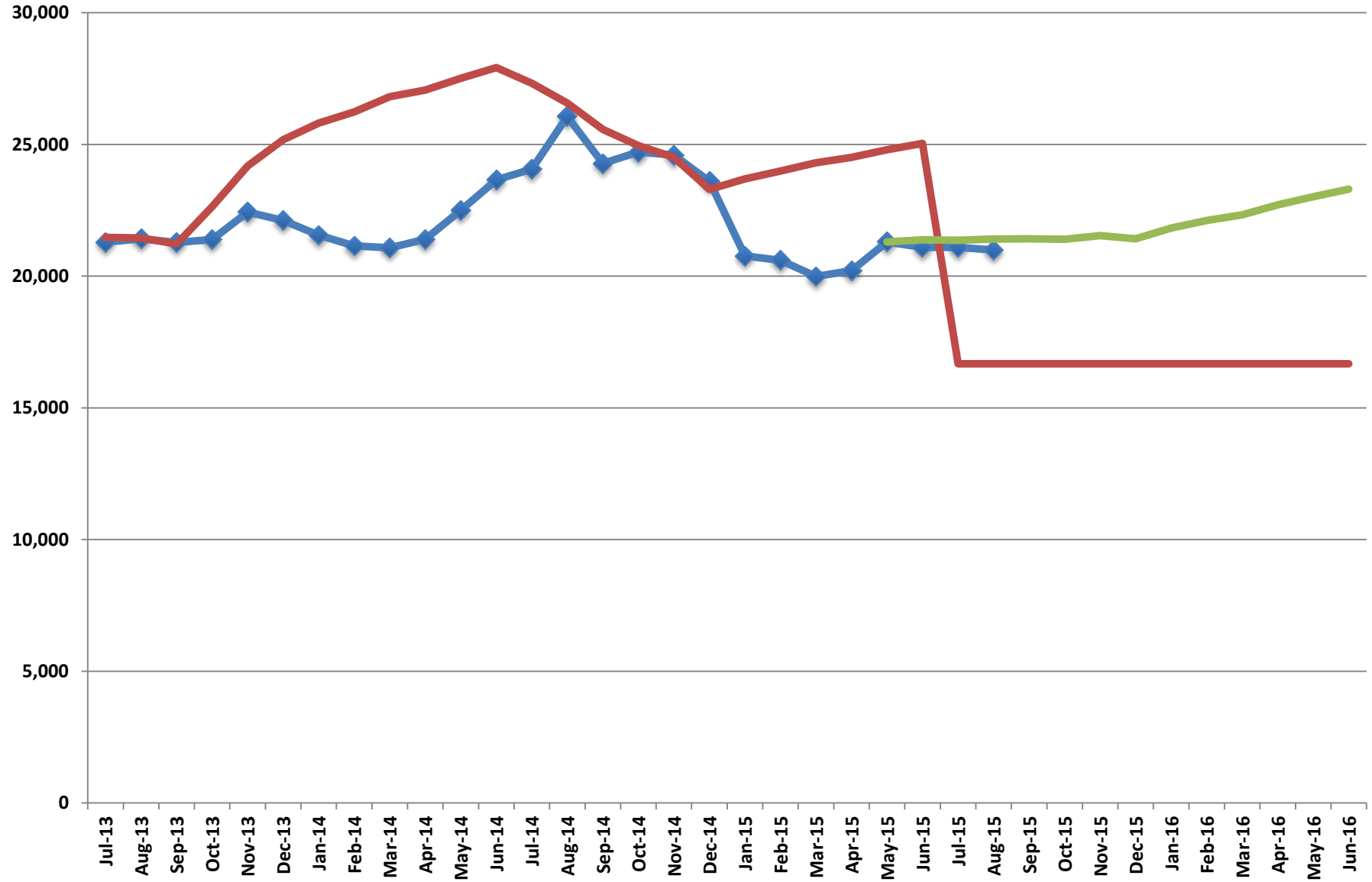
Fiscal Year Average

Fiscal Year	Newly Eligible Adults	Percent Change
FY14	37,231	
FY15	164,423	341.6%
FY16 to date	182,223	10.8%



Note: This caseload includes childless adults age 19-64 between 0%-138% FPL and parents age 19-64 between 23%-138% FPL.

Nevada Check Up



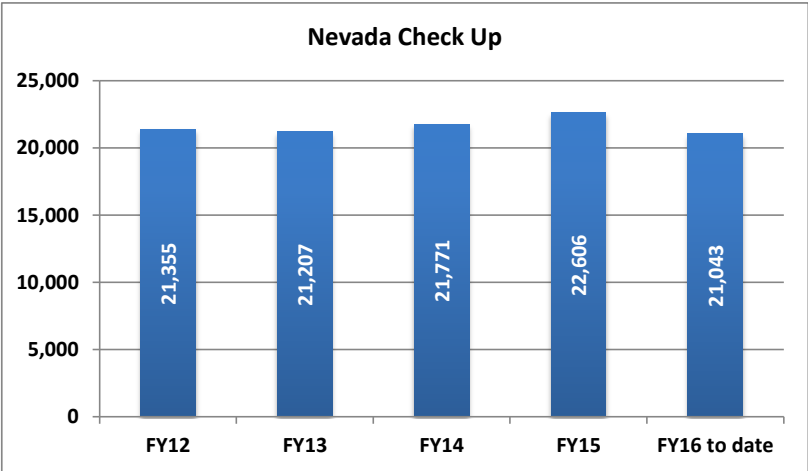
◆ Nevada Check Up — Leg. Approved — June 2015 Projection

Nevada Check Up

Month	Nevada Check Up	Leg. Approved	June 2015 Projection
Jul-13	21,287	21,470	
Aug-13	21,415	21,447	
Sep-13	21,275	21,225	
Oct-13	21,392	22,636	
Nov-13	22,430	24,181	
Dec-13	22,116	25,181	
Jan-14	21,561	25,807	
Feb-14	21,152	26,240	
Mar-14	21,072	26,810	
Apr-14	21,398	27,065	
May-14	22,495	27,513	
Jun-14	23,655	27,921	
Jul-14	24,062	27,320	
Aug-14	26,057	26,575	
Sep-14	24,276	25,566	
Oct-14	24,717	24,960	
Nov-14	24,597	24,511	
Dec-14	23,604	23,297	
Jan-15	20,770	23,694	
Feb-15	20,601	23,988	
Mar-15	19,987	24,302	
Apr-15	20,210	24,506	
May-15	21,300	24,799	
Jun-15	21,090	25,039	21,382
Jul-15	21,090	16,672	21,360
Aug-15	20,995	16,672	21,405
Sep-15		16,672	21,417
Oct-15		16,672	21,396
Nov-15		16,672	21,539
Dec-15		16,672	21,419
Jan-16		16,672	21,831
Feb-16		16,672	22,111
Mar-16		16,672	22,326
Apr-16		16,672	22,705
May-16		16,672	23,018
Jun-16		16,672	23,299

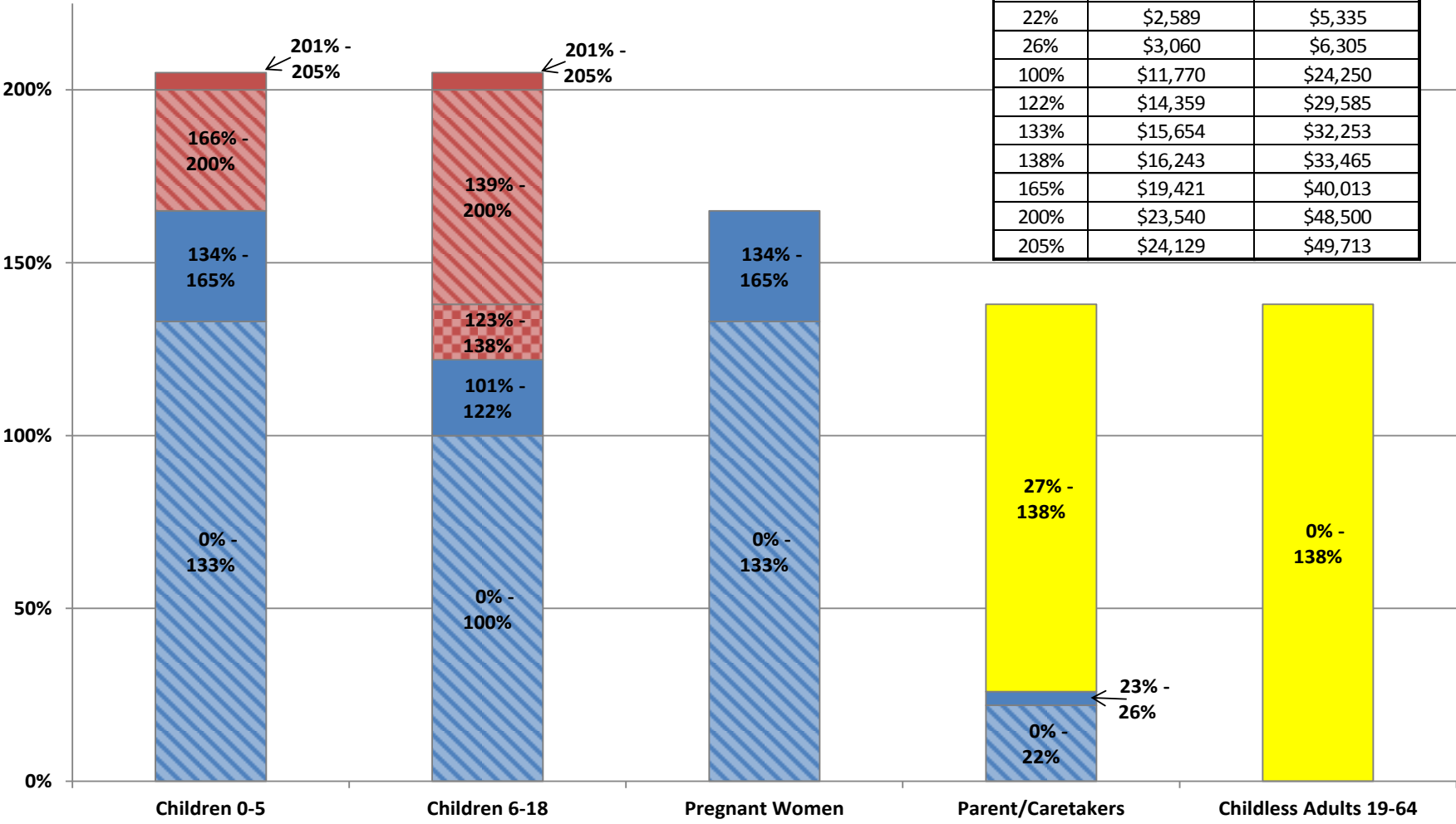
Fiscal Year Average

Fiscal Year	Nevada Check Up	Percent Change
FY12	21,355	
FY13	21,207	-0.7%
FY14	21,771	2.7%
FY15	22,606	3.8%
FY16 to date	21,043	-6.9%



Medicaid Eligibility and FMAP

2015 Federal Poverty Guidelines		
FPL	Household Size 1	Household Size 4
22%	\$2,589	\$5,335
26%	\$3,060	\$6,305
100%	\$11,770	\$24,250
122%	\$14,359	\$29,585
133%	\$15,654	\$32,253
138%	\$16,243	\$33,465
165%	\$19,421	\$40,013
200%	\$23,540	\$48,500
205%	\$24,129	\$49,713



- Old Eligibility Standard, Regular FMAP
- New Eligibility Standard, Regular FMAP
- New Eligibility Standard, Medicaid Clients with CHIP FMAP
- Old Eligibility Standard, CHIP FMAP
- New Eligibility Standard, CHIP FMAP
- New Eligibility Standard, 100% FMAP

Blended FMAP

Updated March 2015

State Fiscal Year	FMAP	Enhanced (CHIP) FMAP	ACA Enhanced (CHIP) FMAP	New Eligibles FMAP
FY03	51.79%	66.25%		
	52.53%	66.77%		
FY04	54.30%	68.01%		
	55.34%	68.74%		
FY05	55.66%	68.96%		
FY06	55.05%	68.53%		
FY07	54.14%	67.90%		
FY08	52.96%	67.07%		
FY09	50.66%	65.46%		
	61.11%	72.78%		
FY10	50.12%	65.08%		
	63.93%	74.75%		
FY11	51.25%	65.87%		
	62.05%	70.44%		
FY12	55.05%	68.54%		
FY13	58.86%	71.20%		
FY14	62.26%	73.58%		100.00%
FY15	64.04%	74.83%		100.00%
FY16	64.79%	75.35%	92.60%	100.00%
FY17	65.25%	75.68%	98.68%	97.50%
FY18	65.68%	75.98%	98.98%	94.50%
FY19	65.77%	76.04%	99.04%	93.50%
FY20	65.54%	75.87%	81.62%	91.50%

NOTE: The green cells reflect a 2.95% increase for the period April 2003 through June 2004. The blue cells reflect the ARRA stimulus adjusted FMAP for October 2008 through December 2010. The FMAP values for FY18 through FY20 are projections.